

Candy Striper

DESIGNED AND MADE
BY ANITA GROSSMAN
SOLOMON



Not to be confused with strip piecing, this quilt is named for candy striper – hospital volunteers who wear striped uniforms. Learn how to make Anita’s Unbiased Block in the Easy Lesson in the April/May 2012 issue of *Quilters Newsletter* then go wild with all your favorite stripes. This quilt was pieced by Solomon and Janice E. Petre of Sinking Spring, Pennsylvania, and quilted by Petre.

ASSEMBLY

1 Wash and press fabrics. Cut the patches, borders and sashing strips listed in the materials and cutting box and shown in the rotary cutting diagram.

2 Referring to the Easy Lesson in the April/May 2012 issue of *Quilters Newsletter*, make 25 of Anita’s Unbiased Blocks. ▶

MATERIALS AND CUTTING

Requirements are based on 40" fabric width. Borders and sashing strips are cut lengthwise. Borders are the exact length required plus seam allowances. The pattern has been simplified for ease of construction.

BLOCK SIZE: 10"

QUILT SIZE: 66" x 66"

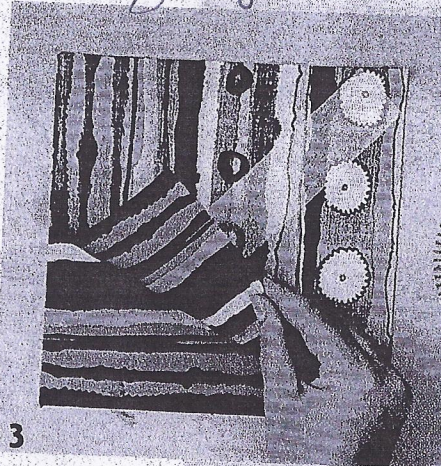
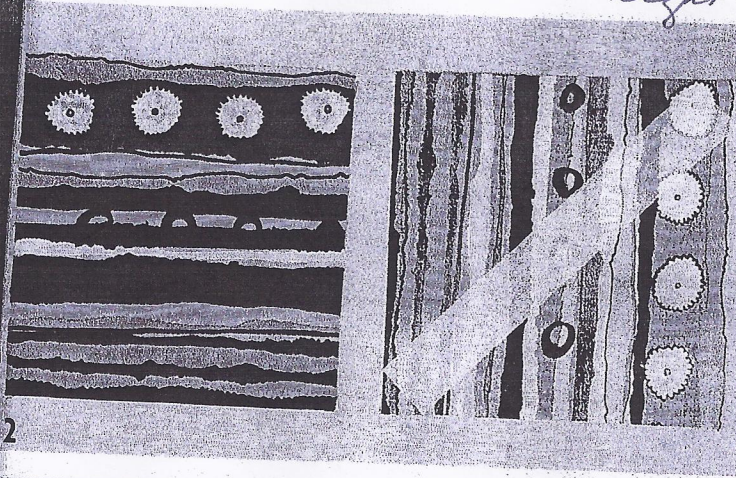
MATERIALS	YARDS	CUTTING
25 Various Stripes	¼ of each fabric	2 A of each fabric
Gray and White	2	2 borders 4½" x 66", 2 borders 4½" x 58½", 4 sashing strips 2½" x 58½", 20 sashing strips 2½" x 10½"
Binding	⅝	8 binding strips 2¼" x 40"
Backing	4⅞	2 panels 36" x 70"
Batting		70" x 70"

ALSO NEEDED: Make It Simpler Fusible® Interfacing by C&T Publishing or other lightweight fusible interfacing

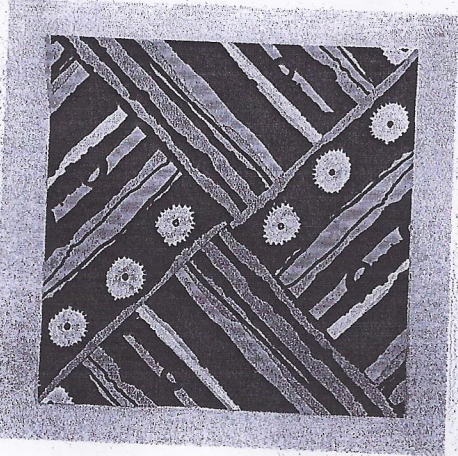
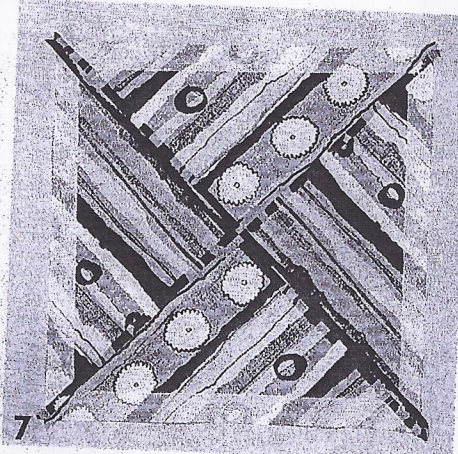
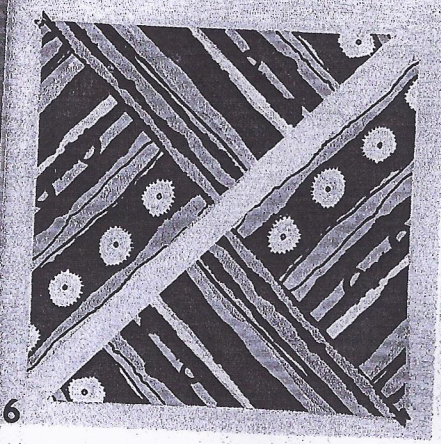
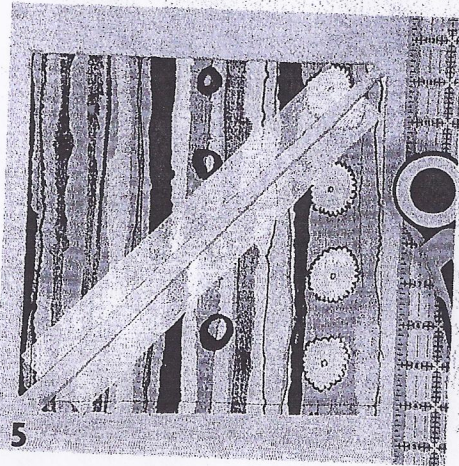
TECHNIQUES USED: fussy cutting, fusing, machine piecing, machine quilting

Before cutting 8 1/2 sq. line up Top + bottom same strip

Antias Unbias block -
light wt interfacing - 10 1/2" - 1 1/2" wide



The fusible interfacing is in the same diagonal position on the top and bottom squares



ASSEMBLY

- 1** Position the two 8 1/2" squares of fabric wrong side up with the stripes running vertically. Be sure the position of the stripes match for both squares. Fuse a 1 1/2" x 10 1/2" strip of fusible interfacing diagonally from lower left to upper right of each fabric square.
- 2** Turn the left square right side up. Rotate it so the stripes run horizontally. Be sure the stripe that runs along the bottom of the left square is the same stripe that runs along the left side of the right square.
- 3** Slide the right square onto the top of the left square, right sides together, aligning raw edges.
- 4** Join the 2 stacked squares in a continuous 1/4" seam pivoting at the corner (red dot) and backstitching at the beginning and end of the seam. Note: The seam begins at a non-interfaced corner, pivots at an interfaced corner and ends at a non-interfaced corner.
- 5** Cut the squares diagonally from the bottom left corner to the top right corner along the center of the fused interfacing.
- 6** Open the units and press the seams open. Square up the long sides perpendicular to the seam.
- 7** Join the two sides with a 1/4" seam, matching the centers. Press the seams open.
- 8** Square up the block to 10 1/2" x 10 1/2" by aligning the 4 corners of a 10 1/2" square ruler over the seam lines. Q

Mini Measure 11 1/2" square